

PROACTIVE PRODUCTION MONITORING

AT ANY TIME AND FROM ANYWHERE.



KraussMaffei

Pioneering Plastics

SOCIALPRODUCTION PRODUCTION. COMMUNICATION. MOBILE. INTUITIVE.



Plastic processors must deliver perfect quality under time constraints. They need machinery with maximum availability and minimum scrap rate. Until now, critical key figures have been monitored and evaluated manually to prevent changes in quality.

Now digitalization offers the option of doing it automatically. Faster, more comprehensively and with better communication than humans could manage alone.

The continuous monitoring of machines allows you to detect anomalies in real time and thus prevent defective components and downtimes. socialProduction combines KraussMaffei's extensive expertise in plastics with forward-looking IT expertise – without compromising on intuitive design and control. The ease of use and attractive design make socialProduction an enhancement in the production hall.

How it is done:

- Continuous access to production status and overall Equipment Efficiency process parameters
- Automatic monitoring of the production process
- Shared chat rooms for humans and machines
- Real-time push messages from subscribed machines
- Visualization system in mobile and Web applications

Your benefits:

- Fast, targeted and secure means of communication in production
- A product that is intelligent to save time in daily operations – rather than taking up extra time
- The machine is always live – in any place, at any time
- Detect process interruptions before a shutdown occurs
- Detect process deviations before component quality suffers
- Complete information transfer from shift to shift

THE INJECTION MOLDING MACHINE AS A TEAM MEMBER IN ONE'S OWN CHAT ROOM

Everybody is familiar with the use of chat rooms and push messages and knows how to upload photos to social media channels. Why should these skills not be used to make communication in the production environment easier, safer and more efficient?



socialProduction is also available as a mobile app in the Google Play Store and Apple App Store.

United: The best of two worlds

A fast and targeted flow of information is as essential in production as it is in one's personal life. This is why KraussMaffei is using socialProduction to move the communication between humans and machines to common chat rooms. The machines send chat messages on their own to report events and problems that have occurred. With seamless integration, users can communicate about these events and problems with texts and images. The machine thus becomes an active team member in the production hall.

Fast and targeted communications channel in production

- Users can send their own messages (text messages, photos) within a machine chat
- Communication between employees in various departments and working different shifts
- Digital production log ensures complete documentation
- Users can subscribe to live push notifications for any machine

PRODUCTION MONITORING THAT IS FUN TO OPERATE: SOCIALPRODUCTION MAKES IT POSSIBLE

Even in the age of digitalization, production supervisors and operators have to complete a large number of manual working steps while also having to optimize productivity and quality. Production monitoring often involves a great deal of labor. Manual identification of process faults or quality changes is complex and takes time.

socialProduction from KraussMaffei combines cutting-edge production monitoring technology with the advantages of social media and is tailored to the needs of the users in the plastics industry. Digital tools such as socialProduction are not only helpful in production—they are even enjoyable for the employees to work with every day. A solution that saves time rather than taking up extra time.

Immediate view of the productivity and stability of machines

Intelligent status display

- Animated real-time display of the machine status
- Display of the historical machine status in the form of a machine timeline

Performance key indicators for production and process

- Productivity: What percentage of time was the machine in active production??
- Stability: How stable is the production process currently in the machine?

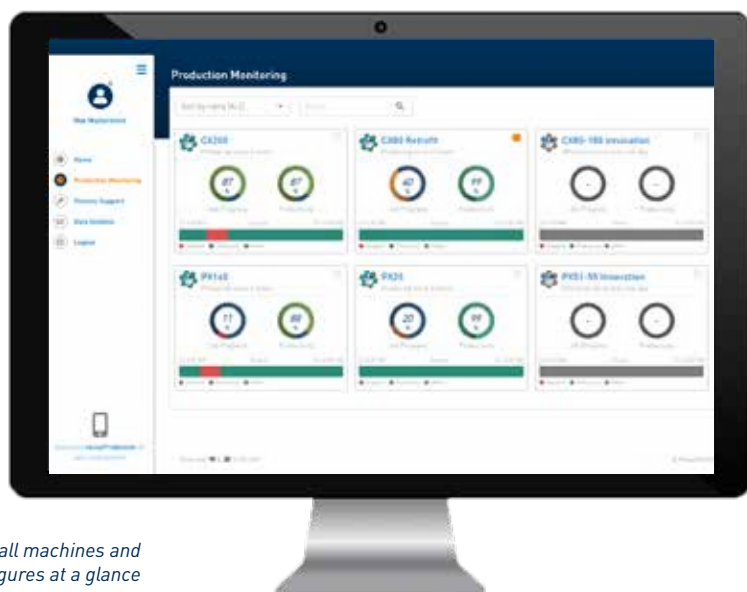
The digital support in everyday production

Prerequisite for efficient production:

- Best possible analysis and use of the data generated by the machine
- Extremely fast response to anomalies in production
- Information transfer from one shift to another

The solution – socialProduction...

- Allows the user to monitor the machine at any time, anywhere
- Provides an overview of the production status and important key figures
- Contains all relevant machine information, which can be accessed from a mobile or Web application



Production monitoring: all machines and key figures at a glance

AUTOMATIC DATA ANALYSIS FOR BETTER UNDERSTANDING OF THE PROCESS

In contemporary machine and system structures, a continuously growing wealth of data and information opens up the option of expanding the present understanding of production and processes. However, the volume of data often exceeds the human capacity to arrange this information so that it makes sense, to draw conclusions and to use the information to solve urgent problems in a way that is advantageous.

In the area of process support, KraussMaffei is also breaking new ground: The production process is continuously monitored by a patented process that uses self-directed learning. Relevant anomalies in the process are identified at an early stage based on the detected machine data and proactively communicated to the user. The technology is rooted in the in-depth plastics process knowledge of KraussMaffei, which for this purpose has been embedded in a complex algorithm.

Automated process monitoring system

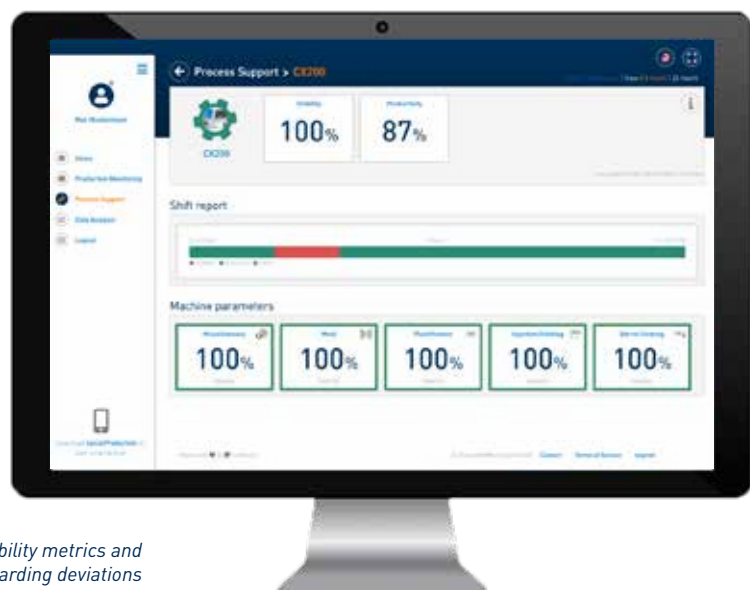
- Identification of faults in the production process by means of artificial intelligence
- Continuous monitoring and evaluation of a large number of data series
- Proactive communication to the user
- Prevention of unplanned downtimes

Ensuring production quality

- Detection of deviations, even before the component quality is impaired
- Process monitoring system without manual configuration
- Significant reduction of downtimes

SOCIAL PRODUCTION – FAR MORE THAN YOU KNOW ALREADY

The other solutions in the market for production monitoring and planning reach their limits whenever there is a demand for expertise in plastics & processes. Commonly used smartphone applications for communication such as WhatsApp are rarely permitted in companies due to IT security regulations and these applications only allow for communication between humans.



Process support – Detailed stability metrics and messages regarding deviations

PROACTIVE PRODUCTION MONITORING

AT ANY TIME AND FROM ANYWHERE.

Push your production efficiency to a new level. socialProduction allows continuous monitoring of productivity, warns you about deviations in the process in real time and uses the familiar options of modern chat communication. The system can be used at any time and in any place. It runs both on smartphones and desktop computers.

The highlights of socialProduction at a glance:

- Automatic monitoring of the production process*
- Extremely fast response to anomalies in production*
- Analysis of productivity and stability*
- Machine-to-human-to-human communication*
- Visualization system in mobile app and Web application*
- Information transfer from shift to shift*
- The machine is always live – in any place, at any time*
- Detect process interruptions before a shutdown occurs*
- Detect deviations within the process before component quality suffers*



kraussmaffe.com